

Kingsweston Centre @ Shirehampton

Maths

Number – counting, addition, subtraction, word problems.

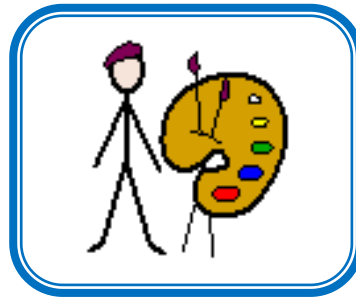
Shape – 2D, 3D shapes. Shape properties.

Position – positional and directional language.

PSHE

Jigsaw topic – Celebrating Difference.

Similarities, differences, bullying, friendships.



Topaz Term 2 – Artists

Art and DT

- Identify primary and secondary colours.
- Adding white and black to colours to make them lighter and darker.
- Identify warm and cool colours.
- Artist – Eric Carle. Identify his art work, technique and tools.
- Artist – Kandinsky. Identify his art work, technique and tools.
- Artist – Mondrian. Identify his art work, technique and tools.
- Pupils will produce pieces of art linked to each artist.

PE

Weekly PE sessions with a specialist sports coach – dance.

Weekly cycling sessions at Bristol Family Cycling Centre.

Extended school visits

Messy art day

Literacy

Focus on

Reading for meaning:

Comprehension skills.

Handwriting:

Overwriting, copy writing, improving handwriting skills (based on pupils' needs/strengths).

Phonics:

Segmenting, blending, tricky words (pupils will follow different phonic phases based on needs/strengths).

Listening and Responding:

LEGO Therapy, following instructions, turn taking, social activities.

Sentence Structure:

Sequencing, adding captions, writing, developing simple punctuation.

ICT

Functions of a camera – taking, uploading and editing photos of our art work.

Homework

Identify different primary and secondary colours in the environment.